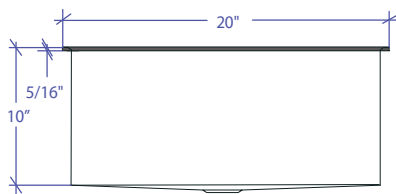
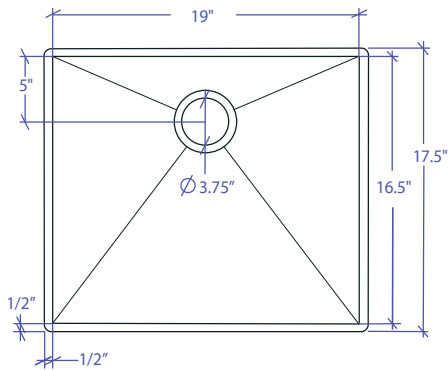


# PROFILE MPOFS-653GPSB-R



\*Flush-Mount Installation Kit is included with each sink  
\*Custom ADA compliant versions are available



## • FEATURES

- 16-gauge type 304 stainless steel
- 304 stainless steel support beam
- Zero radius bowl & rim design

## • TECHNICAL INFORMATION

- External dimension: 20"L x 17.5"W x 10 "D
- Basin dimensions: 19"L x 16.5"W x 10"D
- Rim width: 1/2"
- Rim thickness: 5/16"
- Rim corner: 1/4" round

## • FINISHES

- Graphite PVD Satin Brushed Stainless Steel

## • INSTALLATION OPTIONS

- Flush-mount

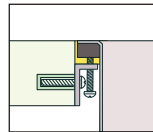
## • MINIMUM CABINET SIZE (I.D.)

- Flush-mount 23"

## • INDUSTRY'S ONLY STAINLESS STEEL SINK DESIGNED SPECIFICALLY TO BE FLUSH-MOUNTED

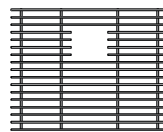
## • INTERNATIONAL PATENT PENDING

## • FLUSH-MOUNT INSTALLATION

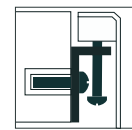


Flush-mount

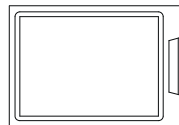
## • ACCESSORIES



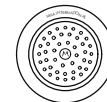
MBG-6506GPSB  
Basin Grid



Flush Mount Kit  
**(Included)**  
MTK-616AL



MCB-651BB  
Cutting Board



MKD-101GPSB  
Strainer



MDC-101GPSB  
Disposal Collar

PROJECT INFORMATION			
Project			
Date	/ /	QTY	
Specifier			
Contact			
Note			