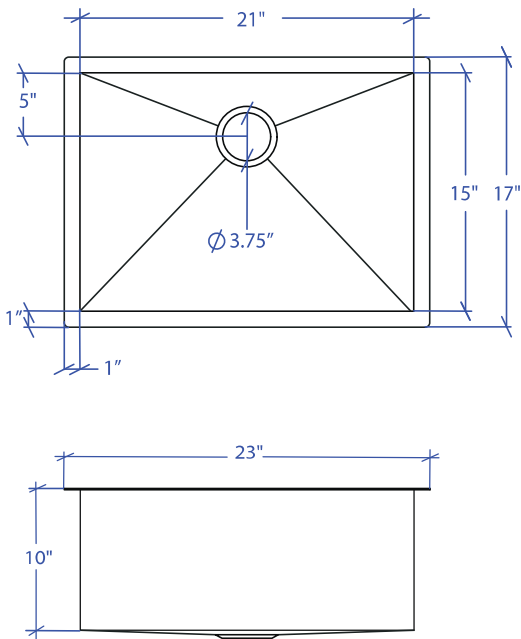


# FLATIRON MUS-502GDSB



\*Custom ADA compliant versions are available



## • FEATURES

16-gauge type 304 stainless steel  
90° zero radius design

## • TECHNICAL INFORMATION

External dimension: 23"Lx17"Wx10"D  
Basin dimensions: 21"Lx15"Wx10"D

## • FINISHES

Gold PVD Satin Brushed stainless steel

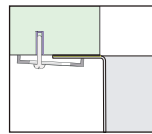
## • INSTALLATION OPTIONS

Top-mount  
Under-mount

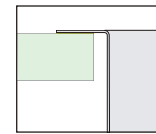
## • MINIMUM CABINET SIZE (I.D.)

Top-mount 24"  
Under-mount 26"

## • DUAL-MOUNT INSTALLATION

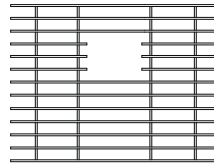


Under-mount

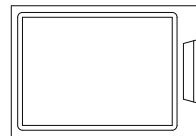


Top-mount

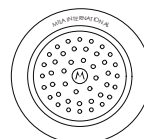
## • ACCESSORY OPTIONS



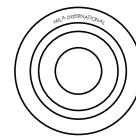
MBG-054GDSB  
Basin Grid



MCB-501BB  
Cutting Board



MKD-101GDSB  
Strainer



MDC-101GDSB  
Disposal Collar

### PROJECT INFORMATION

Project			
Date	/	/	QTY
Specifier			
Contact			
Note			