

WORKSTATION MUWS-637GPSB



• FEATURES

- Patent pending accessories rail system
- Dura Shield scratch resistant coating
- 16-gauge type 304 stainless steel
- EZ clean bevel basin design

• TECHNICAL INFORMATION

- External dimension: 39"Lx18.5"Wx10"D
- Basin dimensions: 37"Lx16.5"Wx10"D
- 1/8" thick sound dampening pad
- Rim width: 1"
- Rim corner: 1/4" round

• FINISHES

- Graphite PVD Satin Brushed stainless steel

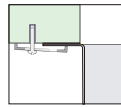
• INSTALLATION OPTIONS

- Under-mount

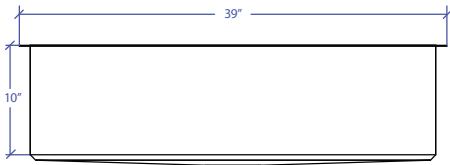
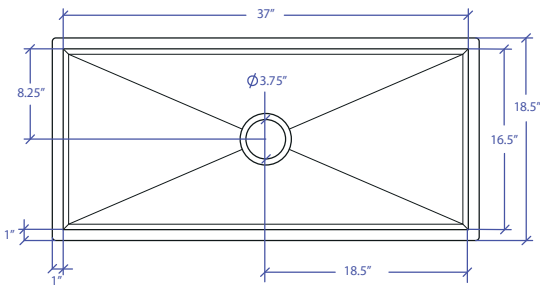
• MINIMUM CABINET SIZE (I.D.)

- Under-mount 41"

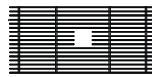
• INSTALLATION TYPE



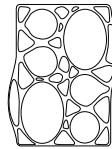
Under-mount



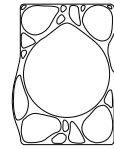
• INCLUDED ACCESSORIES



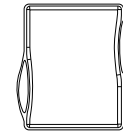
MBG-6519GPSB
Basin Grid



MWBM-651 GPSB
Bain Marie

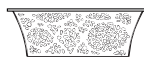


MWSM-651 GPSB
Salad Mixer



MWCB-651GPBB
Cutting Board

• OPTIONAL ACCESSORIES



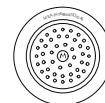
MWC-651GPSB
Colander



MWSS-651GPSB
Side Sink



MDC-101GPSB
Disposal Collar



MKD-101GPSB
Strainer

PROJECT INFORMATION			
Project			
Date	/ /	QTY	
Specifier			
Contact			
Note			