

WORKSTATION MUWS-637SB



• FEATURES

- Patent pending accessories rail system
- Dura Shield scratch resistant coating
- 16-gauge type 304 stainless steel
- EZ clean bevel basin design

• TECHNICAL INFORMATION

- External dimension: 39"Lx18.5"Wx10"D
- Basin dimensions: 37"Lx16.5"Wx10"D
- 1/8" thick sound dampening pad
- Rim width: 1"
- Rim corner: 1/4" round

• FINISHES

- Satin Brushed stainless steel

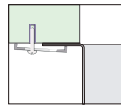
• INSTALLATION OPTIONS

- Under-mount

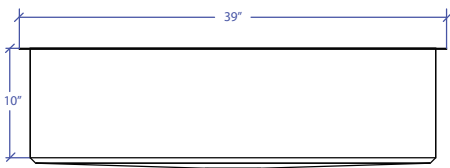
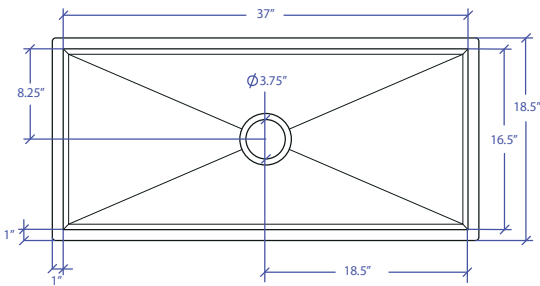
• MINIMUM CABINET SIZE (I.D.)

- Under-mount 41"

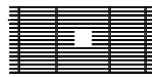
• INSTALLATION TYPE



Under-mount



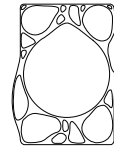
• INCLUDED ACCESSORIES



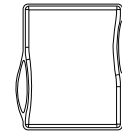
MBG-6519SB
Basin Grid



MWBM-651SB
Bain Marie



MWSM-651SB
Salad Mixer



MWCB-651BB
Cutting Board

• OPTIONAL ACCESSORIES



MWC-651SB
Colander



MWSS-651SB
Side Sink



MDC-101SB
Disposal Collar



MKD-101SB
Strainer

| PROJECT INFORMATION | | | |
|---------------------|-----|-----|--|
| Project | | | |
| Date | / / | QTY | |
| Specifier | | | |
| Contact | | | |
| Note | | | |