

# WORKSTATION MUWS-649GPSB



## • FEATURES

- Patent pending accessories rail system
- Dura Shield scratch resistant coating
- 16-gauge type 304 stainless steel
- EZ clean bevel basin design

## • TECHNICAL INFORMATION

- External dimension: 51"Lx18.5"Wx10"D
- Basin dimensions: 49"Lx16.5"Wx10"D
- 1/8" thick sound dampening pad
- Rim width: 1"
- Rim corner: 1/4" round

## • FINISHES

- Graphite PVD Satin Brushed stainless steel

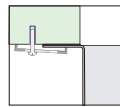
## • INSTALLATION OPTIONS

- Under-mount

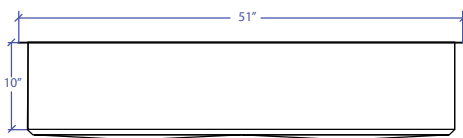
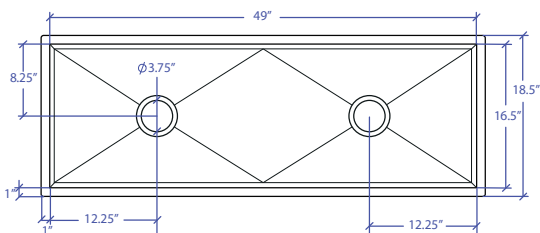
## • MINIMUM CABINET SIZE (I.D.)

- Under-mount 53"

## • INSTALLATION TYPE



Under-mount



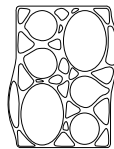
## • INCLUDED ACCESSORIES



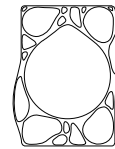
MBG-6520GPSB  
Basin Grid



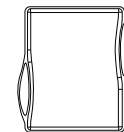
MBG-6520GPSB  
Basin Grid



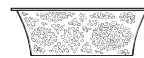
MWBM-651GPSB  
Bain Marie



MWSM-651GPSB  
Salad Mixer



MWCB-651GPBB  
Cutting Board



MWC-651GPSB  
Colander

## • OPTIONAL ACCESSORIES



MWSS-651GPSB  
Side Sink



MDC-101GPSB  
Disposal Collar



MKD-101GPSB  
Strainer

PROJECT INFORMATION			
Project			
Date	/ /	QTY	
Specifier			
Contact			
Note			