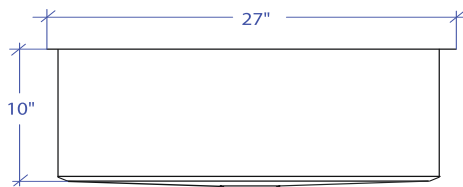
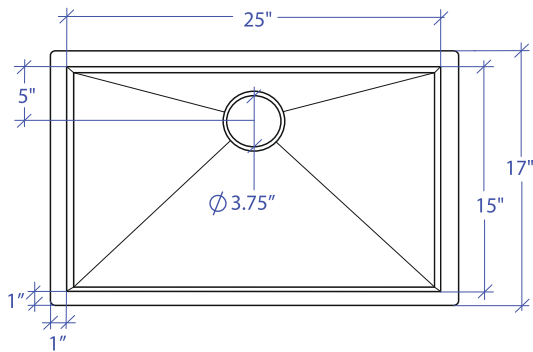


# ORION MOUS-503GPSB



\*Custom ADA compliant sinks are available



## • FEATURES

16-gauge type 304 stainless steel  
Bevel basin design

## • TECHNICAL INFORMATION

External dimension: 27"Lx17"Wx10"D  
Basin dimensions: 25"Lx15"Wx10"D

## • FINISHES

Gray PVD Satin Brushed stainless steel

## • INSTALLATION OPTIONS

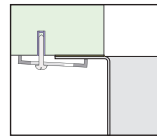
Top-mount  
Under-mount

## • MINIMUM CABINET SIZE (I.D.)

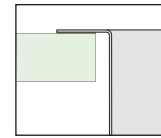
Top-mount 28"  
Under-mount 30"

## • US DESIGN PATENT D618,324 S

## • DUAL-MOUNT INSTALLATION

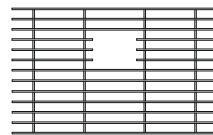


Under-mount

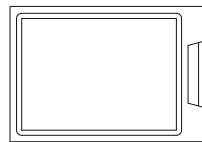


Top-mount

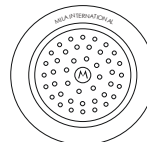
## • ACCESSORY OPTIONS



MBG-055GPSB  
Basin Grid



MCB-501BB  
Cutting Board



MKD-101GPSB  
Strainer

PROJECT INFORMATION			
Project			
Date	/ /	QTY	
Specifier			
Contact			
Note			