

# FLATIRON MUS-504SB



\*Custom ADA compliant versions are available

## • FEATURES

- 16-gauge type 304 stainless steel
- 90° zero radius design

## • TECHNICAL INFORMATION

- External dimension: 32"Lx17"Wx10"D
- Basin dimensions: 30"Lx15"Wx10"D

## • FINISHES

- Satin Brushed stainless steel

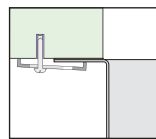
## • INSTALLATION OPTIONS

- Top-mount
- Under-mount

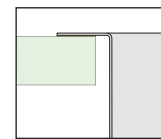
## • MINIMUM CABINET SIZE (I.D.)

- Top-mount 33"
- Under-mount 35"

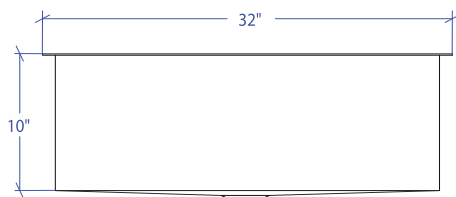
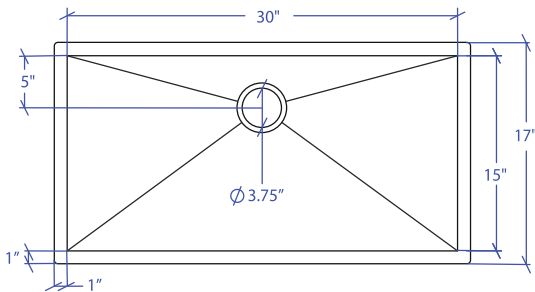
## • DUAL-MOUNT INSTALLATION



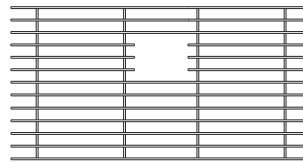
Under-mount



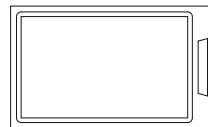
Top-mount



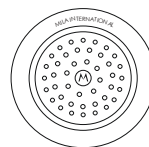
## • ACCESSORY OPTIONS



MBG-056SB  
Basin Grid



MCB-501BB  
Cutting Board



MKD-101SB  
Strainer

PROJECT INFORMATION			
Project			
Date	/ /	QTY	
Specifier			
Contact			
Note			