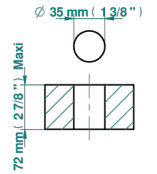


ø de perçage conseillé
recommended drilling ø
empfohlener Abstand
Ø de perforación aconsejado



72768

12/02/2020

CHARACTERISTIC

- Corvaair
- 2-function deck diverter with trim

AVAILABLE FINITIONS

Blush PVD - H62
Brass color PVD - H49
Chrome polished - A02
Gold color PVD - H52
Gold mat - F07
Gold polished - F01

Graphite PVD - H64
Light coated bronze - D01
Matt Umber PVD - H67
Matt blush PVD - H60
Matt brass color PVD - H50
Matt chrome (American satin) - C02

Matt gold color PVD - H53
Matt graphite PVD - H65
Matt nickel (American satin) - C01
Matt nickel color PVD - H56
Nickel color PVD - H55
Nickel polished - B01

Polished chrome with gold inlay - GA1
Silver polished, antique - H03
Soft gold - F30
Soft matt gold - F31
Umber PVD - H66